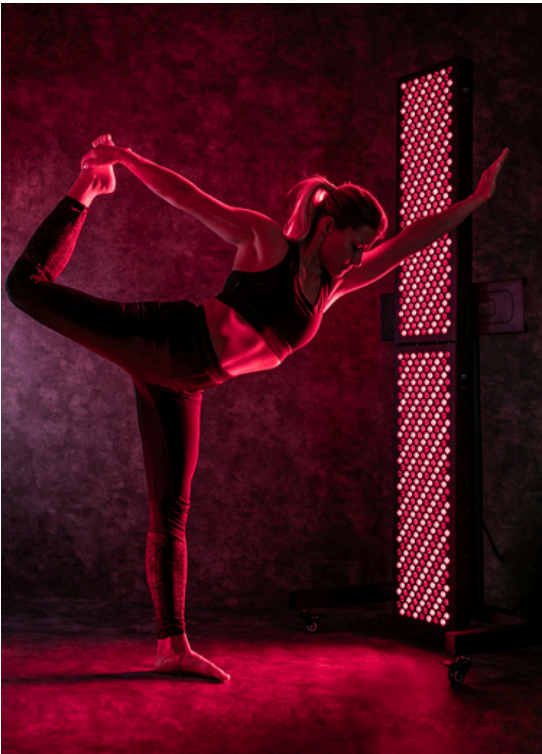


Red Light Therapy Devices

SUMMIT EDITION

About Us

We founded our company Alpinglow Sàrl because we decided to spread the revolutionary benefits of infrared and red light therapy in Switzerland and abroad.



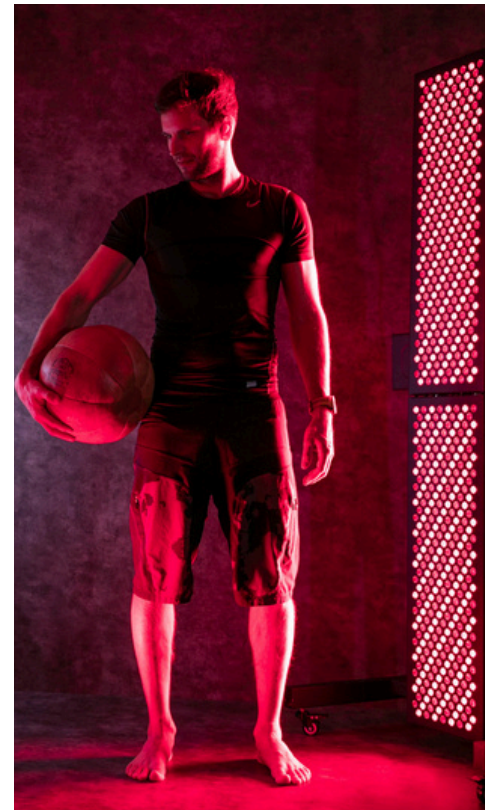
In the modern age people spend 90% of time indoor. The powerful energy of red and near-infrared light panels has become a source of wellness and healthy lifestyle.

Located in the magical Swiss Alps in Crans Montana, we proudly deliver our Alpinglow Therapy panels to various countries across Europe and upon personalised order we deliver also outside Europe.



OUR MISSION

Our goal is to provide people with a high-quality product that can help them achieve optimal health and positively impact their lives. We aim to inform people about this innovative technology, which supports faster recovery, improves sleep, reduces inflammation, increases energy, and helps maintain physical and mental well-being.



WHY ALPINGLOW?



Designed and tested
in Switzerland



High-end devices



CE, RoHS, FCC
Certified, FDA



Zero EMFs
from 10cm



Swiss Leader
in Red light therapy

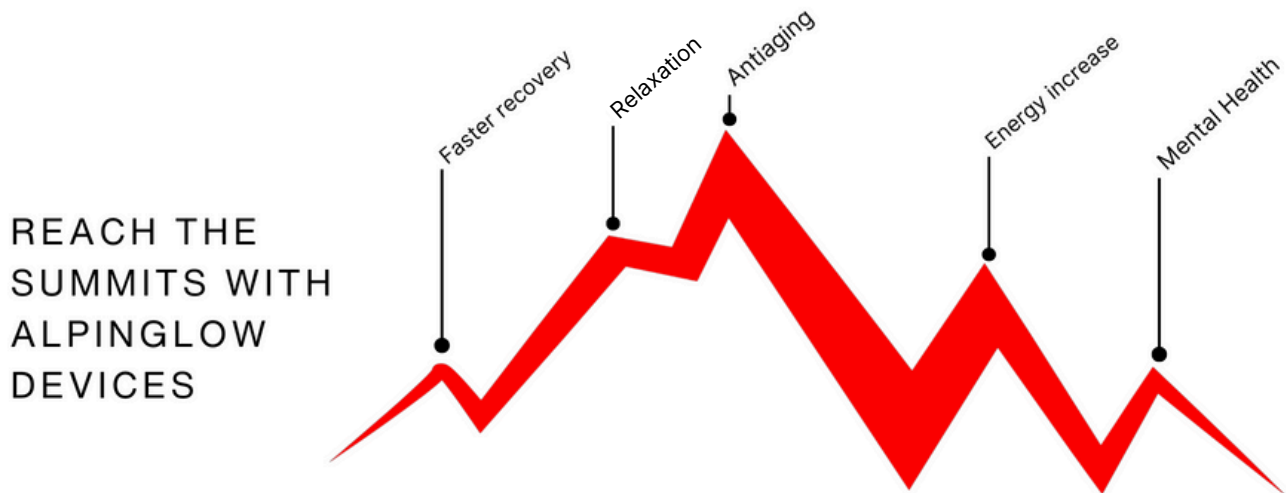


Based in Crans-
Montana

Red Light Therapy

Red light therapy, also recognized as photobiomodulation is a progressive non-invasive technique that harnesses the power of specific red and near-infrared light wavelengths.

Red light therapy works on a cellular level, stimulating the mitochondria to produce more ATP (cellular energy), leading to faster muscle and injury recovery, reduced pain, improved circulation, quality sleep and mental health, healthier skin, enhanced collagen production, potentially supporting a healthy circadian rhythm and combating jet lag.



Over 5,000 scientific studies and over 500 clinical trials.

Red light therapy is beneficial for athletes, individuals pursuing a healthy lifestyle, people with pain or injuries, those seeking skin rejuvenation, busy individuals under stress, experiencing lack of sleep and seeking energy, and anyone aiming to reduce inflammation and improve overall wellness.

Red light (RED): 600-700nm wavelengths, offers benefits for skin texture and tone, smoothing fine lines and wrinkles, promoting collagen production, generally rejuvenating the appearance of skin and hair.

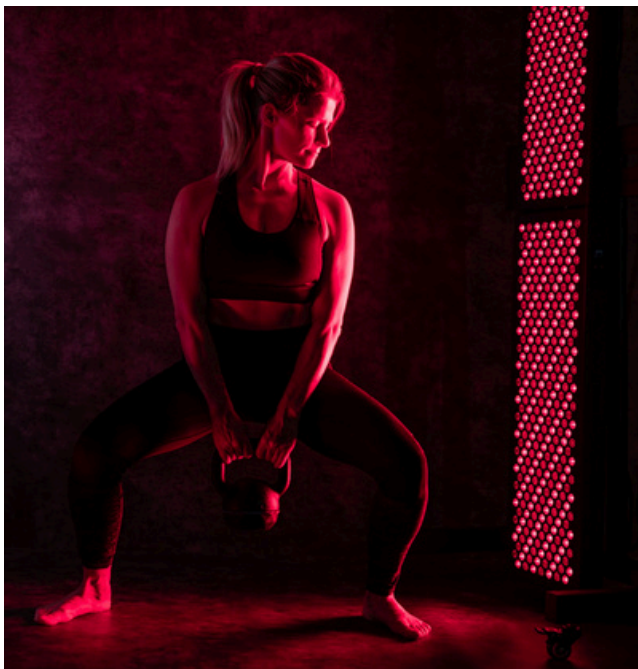
Near-infrared light (NIR) (700nm-1100nm) penetrates deeper into the tissues, may help with muscle recovery, support comfort in joints, and alleviate occasional discomfort. It is also known to promote sleep quality and overall well-being, potentially enhancing mood and mental clarity.



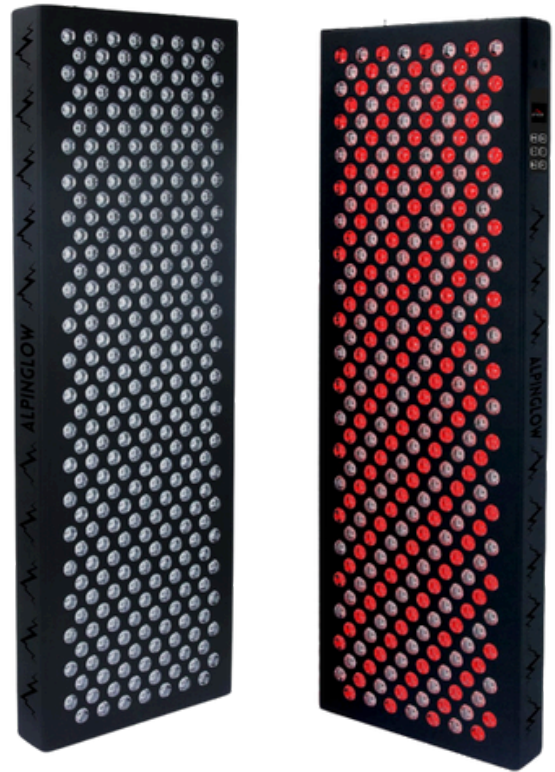
Alpinglow Summit Expert1500



The Alpinglow Summit1500 is a powerful device designed to target large areas effectively, measuring 119.4 cm x 61 cm. It features advanced LED technology, including red light at 660nm and near-infrared light at 850nm, offering various benefits such as enhanced muscle recovery, improved sleep quality, support for cognitive function, collagen production, energy levels, and overall comfort. It may also help promote skin rejuvenation and a general sense of well-being.



With a user-friendly touch display and remote control feature, adjusting therapy settings is convenient and customizable. Additionally, for larger spaces or SPA and fitness center, multiple panels can be connected to ensure extensive coverage.



Parametres

- 1500 W
- RED60 & NIR30 Degree lens
- 660nm: 850nm
- 90.9cm x 29.9 cm x 6.6 cm 10.8KG



Reach the peak of performance with the Alpinglow Summit1500

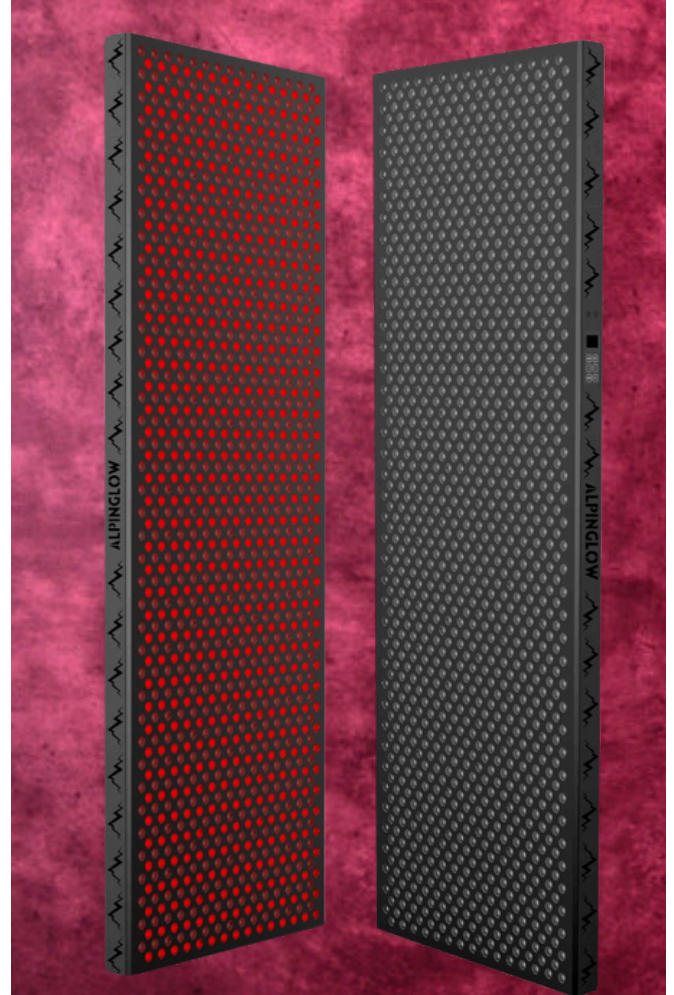
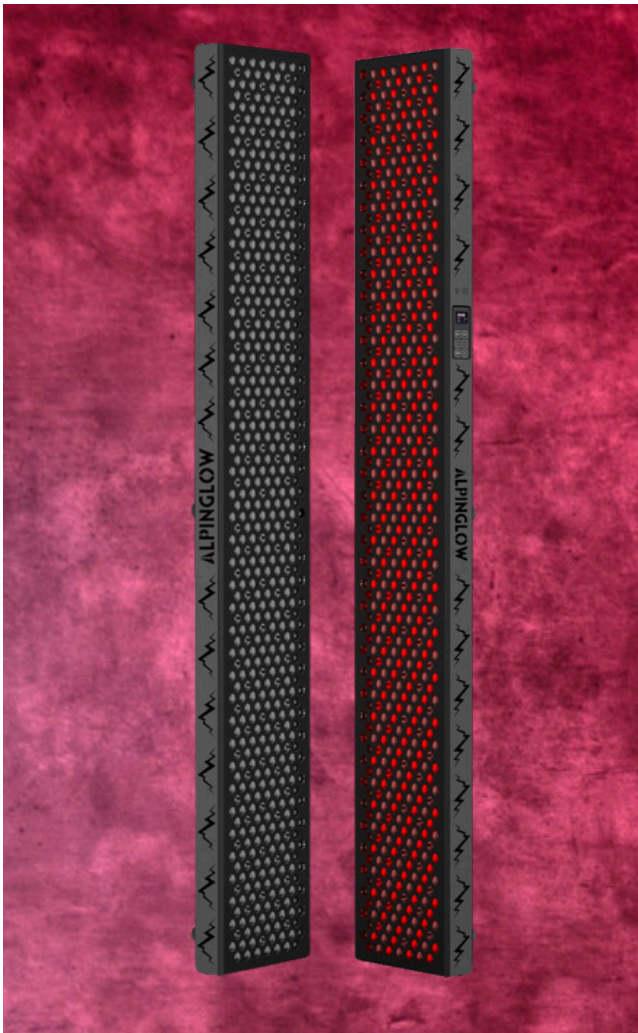
Full body therapy

Alpinglow Summit GrandMaster6000

Introducing the Summit GrandMaster6000: A massive solution for inclusive light therapy, featuring an expansive 180x60cm display. Perfect for hotels and spas, luxury chalets, wellness retreats, and upscale fitness clubs. Summit GrandMaster6000 ensures unparalleled coverage and effectiveness, providing a premium light therapy experience for high-end clients.

Parametres

- Full Body Treatment
- 180.1 cm x 60.0 cm x 6.6 cm
- 6000 W
- RED60 & NIR30 Degree lens
- 660nm: 850nm
- 41kg



Alpinglow Summit Master3000

Introducing the Summit Master3000: A robust and expansive solution designed to accommodate up to two Summit Expert 1500 panels vertically, creating an impressive display measuring 180x30cm, perfect for full-body coverage. Ideal for those seeking comprehensive and efficient light therapy.

Parametres

- Full Body Treatment
- 180.1 cm x 30.0 cm x 6.6 cm
- 3000 W
- RED60 & NIR30 Degree lens
- 660nm: 850nm
- 21,6kg

Full body therapy



Full Body Setup + Stand

The ultimate solution for premium red light therapy, the Alpinglow Full Body Setup consists of Summit Expert 1500 Bundle or Summit Master3000 paired with Horizontal Stand or Pneumatic Stand.

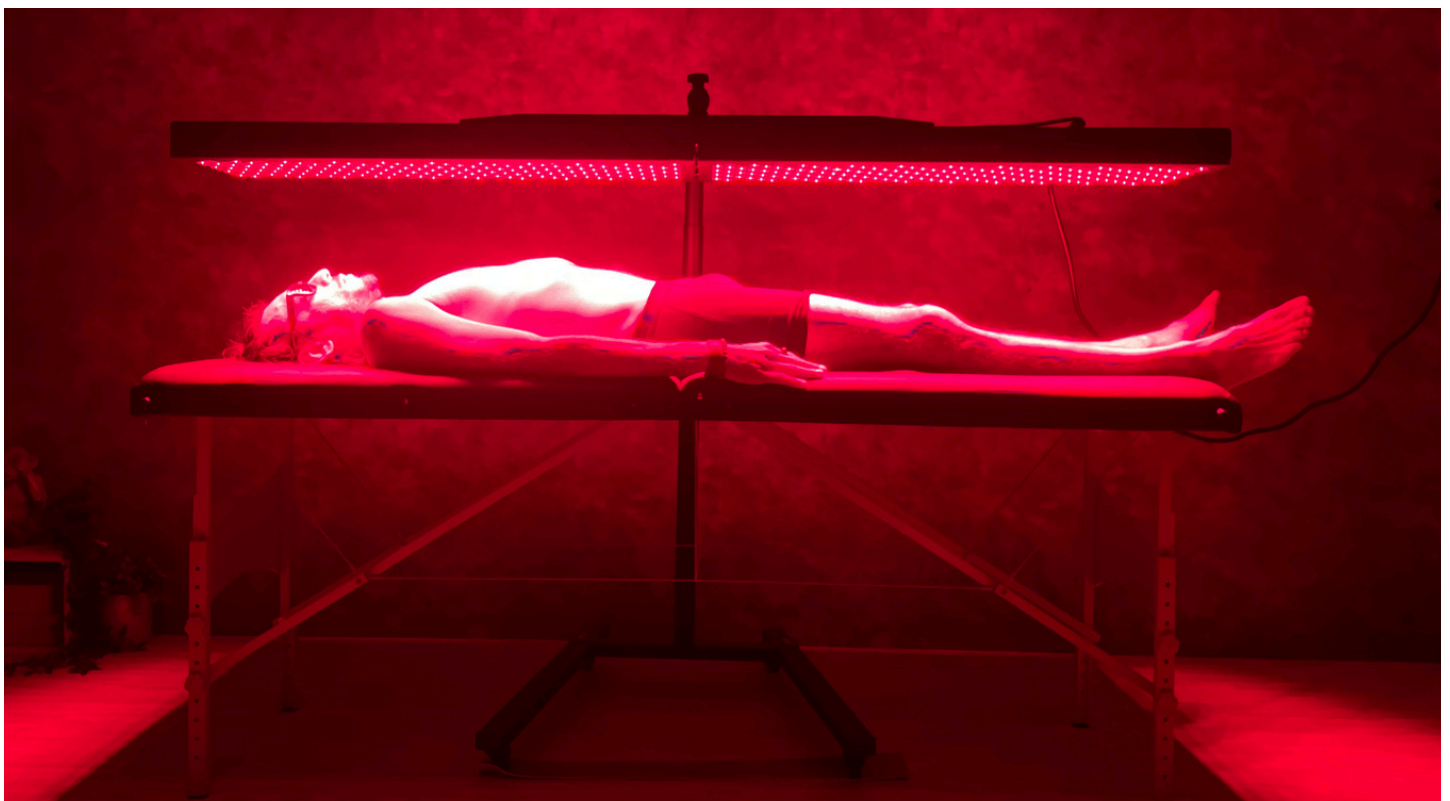
Perfect for:

- Massage salons, spas, wellness centers, clinics, or even home use, delivering a luxurious and professional-grade experience.

Features:

- Full Body Treatment: Creates a stunning 180x30cm display, ideal for therapy while lying down.
- Versatile Positioning: Panels can also be arranged vertically for a unique, immersive wellness experience.

Enhance your therapy setup with the Alpinglow Full Body Therapy for unparalleled coverage, superior functionality, and unbeatable value.

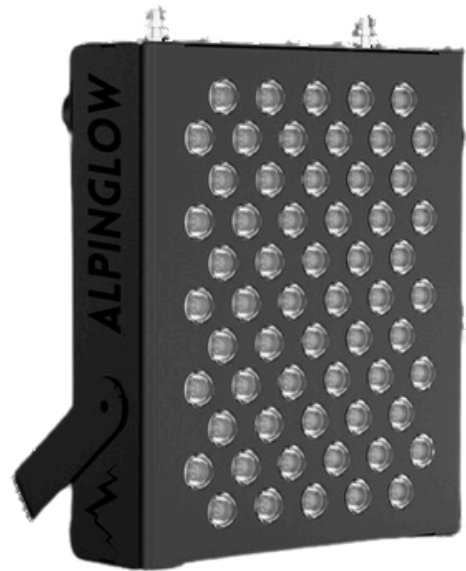


Targeted therapy



Alpinglow Summit Lite300

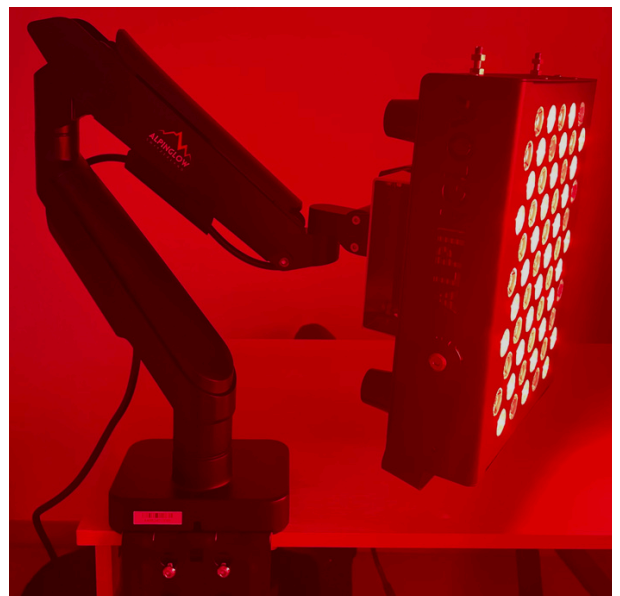
The Alpinglow Summit Lite300 is an ideal tool for targeting specific areas of the body (measuring 71.12 cm x 60.96 cm). It is also used on the face to support collagen production and help reduce the appearance of fine lines. This device is designed to promote relaxation, improve muscle recovery, and enhance overall physical performance. It may also help improve mood and support general well-being.



Parametres

- RED60 & NIR30 Degree lens
- 300 W
- 660nm:850nm
- 26.9cm x 23.1 cm x 6.6 cm
- 3.5 KG

Alpinglow Summit Lite300 offers user-friendly touch display and remote control to easily set the duration of your therapy session (1-30 min), pulse intensity (1-20Hz) or intensity of the RED or NIR spectrum ranging from 0% to 100%. It can be purchased with the movable ArmFlex that makes it easier to target the specific areas.



Targeted therapy



Alpinglow Summit Traveler

The Summit Traveler is a compact red light therapy device designed for targeted treatments. It offers various benefits, including improved skin texture, reduced inflammation, enhanced cognitive function, helps alleviate discomfort and overall skin rejuvenation. Its compact size makes it ideal for travel, and it features a user-friendly one-button operation for easy use.



Parametres

- 15 pcs high quality double chip LEDs
- 30 degree lens
- 660nm : 850nm
- 15.0cm x 7.5cm x 3.0cm
- 0.45 KG

- 3 different treating mode
- USB charger - up to 4 hours
- Target the area for 10-20min



Enjoy the glowing wellness anywhere you go!

Alpinglow Jungfrau Facemask



Elevate your skincare routine with the Alpinglow Jungfrau Facemask, designed to rejuvenate skin and enhance elasticity. With 7 different light sources targeting various skin concerns, this mask offers versatile solutions for skincare on your face, neck and chest. Experience revitalized skin in just 10-15 minutes of use.



- Red Light: Boosts collagen, rejuvenates skin, and reduces wrinkles.
- Blue Light: Clears acne, reduces inflammation, and sterilizes the skin.
- Green Light: Balances oil, relieves stress, and reduces swelling.
- Yellow Light: Energizes cells, improves texture, and enhances immunity.
- Purple Light: Combines red and blue for acne management.
- Cyan Light: Boosts cell energy and metabolism.
- White Light: Penetrates deeply, accelerates metabolism, and improves skin tone.

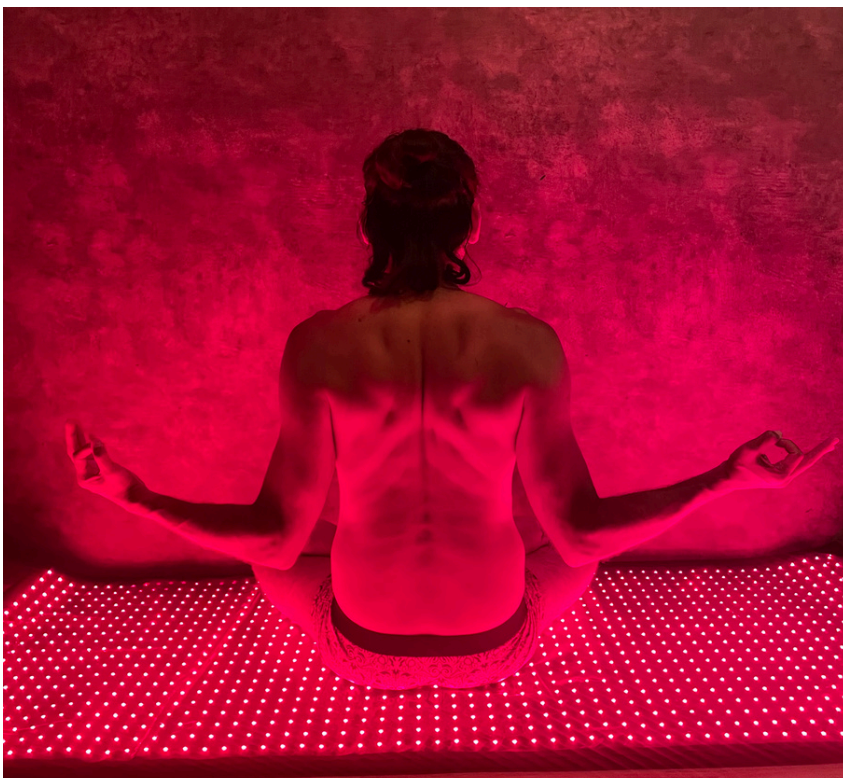


Experience glowing skin with our portable facemask!

Alpinglow Summit Mat



Meet the Alpinglow Summit Mat, the most versatile red light therapy mat. With its flexible Dual LEDs, it adapts to all needs: lying down, sitting, hanging or transporting. Measuring 179.8cm x 80cm, it provides full-body therapy. Perfect for enhancing the benefits of exercise, it pairs with the Alpinglow Summit Expert1500 for a cost-effective solution. Protected by a plastic layer, it guarantees hygiene. Ideal for fitness and wellness enthusiasts.



Settings

- LED: 1280pcs 3 in 1 chip
- Wavelengths: 660 nm and 850 nm
- Taille : 179,8 cm x 80 cm
- Mat material: Neoprene, Fabric
- Three light settings: red/NIR light combination, red light only, NIR light only
- Programmable timer: 10, 20, 15, 30, 40, 50, 60, 70, 80 or 90 minutes
- Electrical input: 100-240 VAC, 50/60 Hz
- Light intensity: 5 levels
- LED lifespan: 100,000 hours

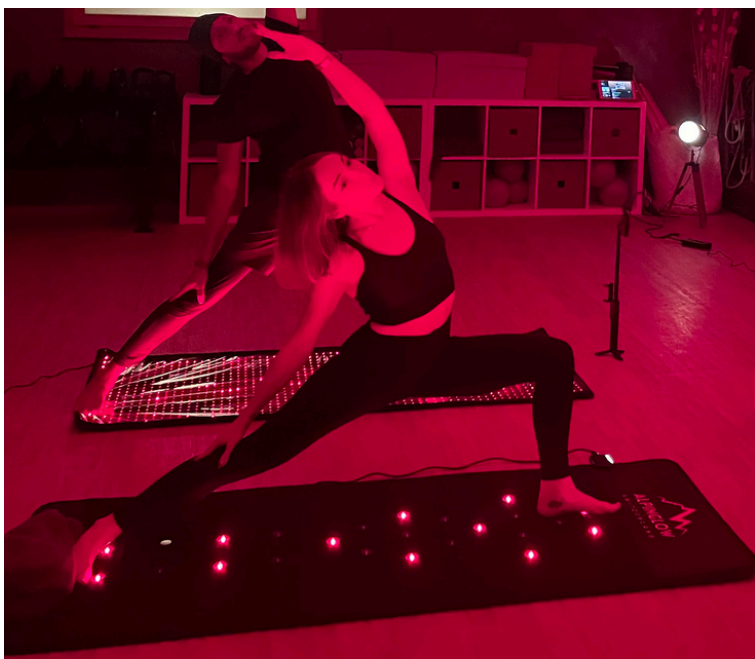
Alpinglow Wellness PEMF Mat



The Alpinglow Wellness PEMF Mat is a versatile tool for relaxation and recovery, combining PEMF technology, far-infrared heating, and natural crystal therapy. Perfect for fitness and wellness enthusiasts, it promotes recovery, circulation, and deep relaxation.

Features:

- **PEMF Technology:** Supports cellular repair and recovery through pulsed electromagnetic fields.
- **Far-Infrared Heating:** Boosts circulation and relaxation, with adjustable temperatures up to 70°C.
- **Amethyst Crystal Layer:** Enhances calming effects, promotes stress relief, and amplifies the far-infrared heating benefits.
- **Negative Ions:** Improves mood, balances energy, and supports detoxification.
- **Customizable Settings:** Adjustable intensity and session durations.
- **Portable Design:** Lightweight and easy to use anywhere.



Specifications:

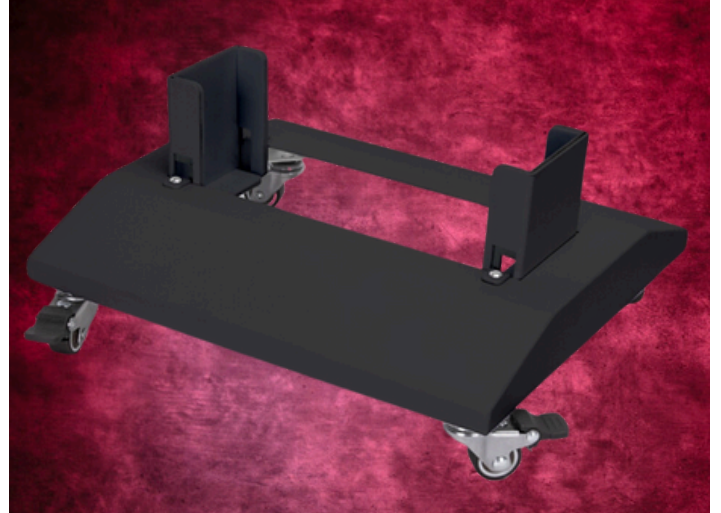
- **Dimensions:** 180 cm x 80 cm.
- **Material:** High-quality fabric and durable construction for long-lasting use.
- **Time Settings:** Adjustable session durations to suit individual needs.
- **Input Voltage:** 100-240 VAC, 50/60 Hz.
- **Weight:** Lightweight and portable for convenience.
- **Safety Features:** Built-in protection for safe, worry-free use.

Alpinglow Summit Stands



Summit Floor Stand

Designed for those who prefer a floor-mounted setup. Offering maximum stability and mobility.



Summit Vertical Stand

A robust and expansive solution designed to accommodate up to four Summit Expert 1500, Two Summit Master3000 or one Summit GrandMaster6000 panels vertically, creating an impressive display measuring 180x60cm

Summit Horizontal Stand

A spacious solution designed to accommodate up to two Summit Expert 1500 panels or one Summit Master3000, creating an impressive 180x30cm display vertically or horizontally making the possibility to use the panels while laying down.



Alpinglow Summit Stands



Summit Pneumatic Stand

The stand is easily adjustable for horizontal or vertical use, with a height range of 97.5-136cm to ensure optimal positioning for targeted or full-body treatment. It offers precision and adaptability to suit your needs.



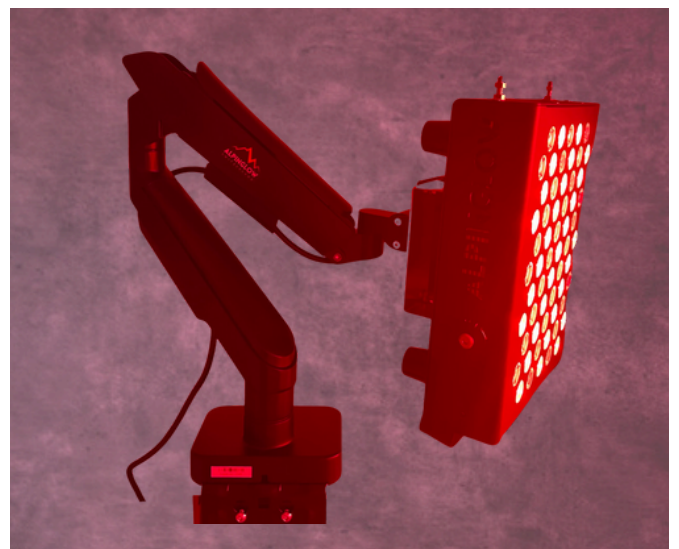
Summit Motorized Lift Stand

Motorized Lift Stand, designed for versatility and advanced technology. With a 50Kg load capacity, it supports powerful devices like the Summit GrandMaster6000. The stand's adjustable stroke range of 78-160cm allows for optimal positioning at the touch of a button. Powered by a reliable 24VDC output and operating between 0-40°C, it ensures consistent and durable performance.

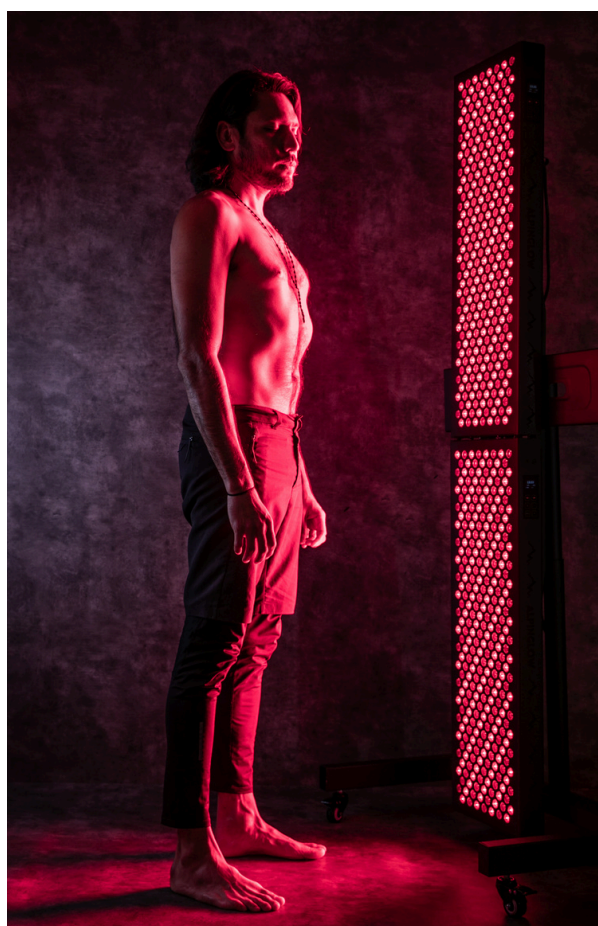
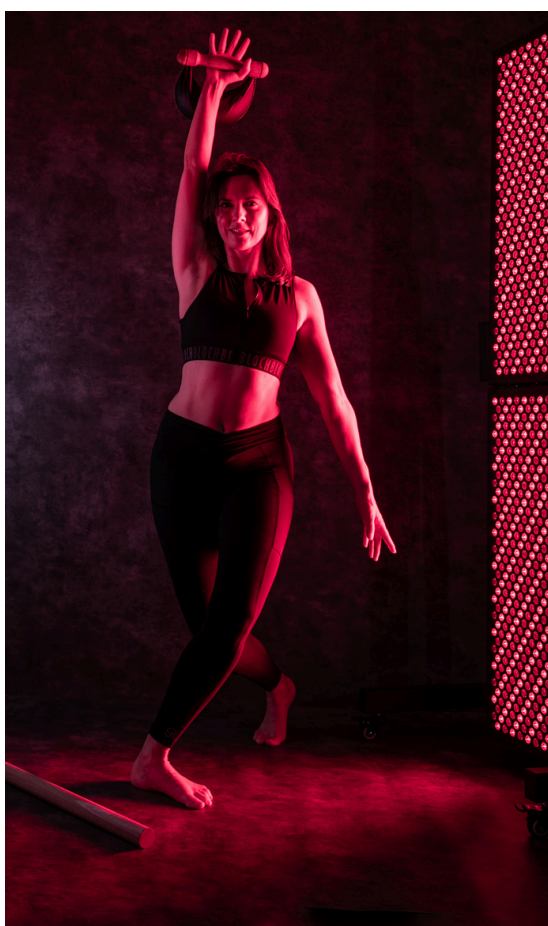
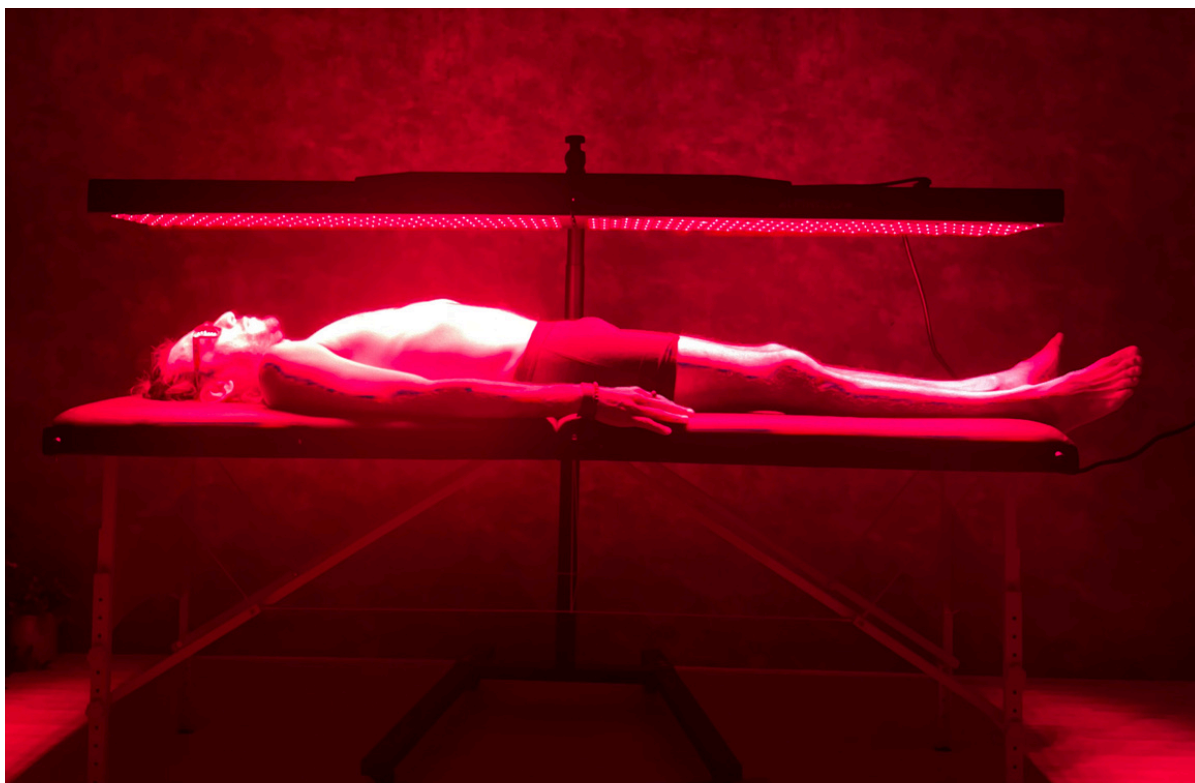


Alpinglow Summit ArmFlex Lite 300

Movable arm compatible with Alpinglow Summit Lite300. ArmFlex offers you a wide range of tilt, swivel and rotation settings. It can be turn left and right, up and down. You can also move just the panel 90° left, 90°right, 50°up, 20° down. It can hold from 2 to 20kg.



Gallery





www.alpinglow.ch



[alpinglow_switzerland](https://www.instagram.com/alpinglow_switzerland)



[Alpinglow](https://www.facebook.com/Alpinglow)



info@alpinglow.ch



+41 79 674 71 07



Crans Montana, Switzerland



Designed and tested in Switzerland.

www.alpinglow.ch

Disclaimer: Red light therapy panels are intended for general wellness purposes only and should not be used as a substitute for professional medical advice or treatment. Individual results may vary. Consult a healthcare professional before use.